



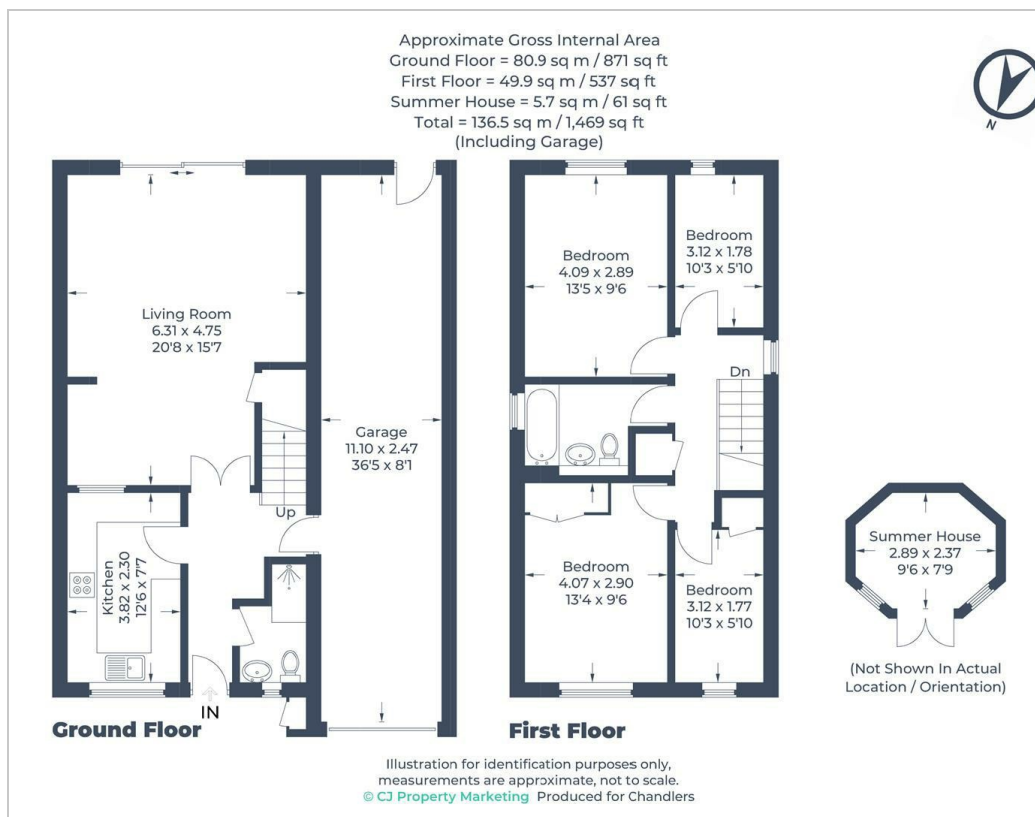
TO LET


5 Blackmore, Letchworth Garden City, SG6 2SX £2,000 Per Month

- Four bedroom family home
- Popular Location
- Driveway and tandem garage
- Just refurbished
- Fitted kitchen with white goods
- Large sitting / dining room
- Beautiful bathroom
- Enclosed rear garden with summer house
- Downstairs shower room
- Available now

THE PROPERTY

A fully refurbished four bedroom family home situated in the the poplar Lordship area of Letchworth. Offered to let with the benefit of Chandlers full management service the property offers entrance hall, downstairs shower room, fitted kitchen with fitted double oven / microwave, integrated dishwasher, freestanding washing machine and fridge freezer. A large / dining room provides a generous sized room with understairs storage cupboard. Upstairs are four bedrooms and a beautifully refitted bathroom. Outside is a driveway leading to a double tandem garage and enclosed rear garden with summer house. (EPC C, North Herts Council, Tax Band E)



Energy Efficiency Rating		
	Current	Potential
Very energy efficient - lower running costs		
(92 plus) A		8
(81-91) B		
(69-80) C		
(55-68) D		
(39-54) E		
(21-38) F	73	
(1-20) G		
Not energy efficient - higher running costs		
England & Wales		EU Directive 2002/91/EC